

Wood B-Warmer®

DIY FLOOR HEATING



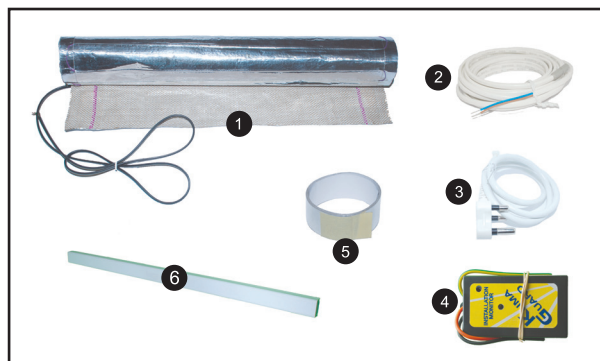
- SAFEST
- HEALTHIEST
- ENERGY EFFICIENT



Wood B-Warmer®

DIY FLOOR HEATING

- DIY Underwood floor heating kits that can be fitted in less than 2 hours.
- Colour coded guide provided for easy size selection.
- Thermostat guide



Included in each DIY kit:

1. Wood B-Warmer® Heater
2. Floor sensor (EzeeProbe™)
3. 1m cord with moulded 16 A plug
4. KlimaGuard® installation monitor
5. Adhesive tape
6. Trunking for retrofit
7. User guide (not shown in picture)
8. Installation instructions (not shown in picture)

Thermostat not included.

FREQUENTLY ASKED QUESTIONS

Where can I install COLDBUSTER® under wood heating?

You can install COLDBUSTER® under wood heating in any room of your choice, but generally we don't recommend laminate flooring in bathrooms.

How much heating do I need?

To determine how much heating you need, simply measure the size of the room you wish to heat and refer to the selection tables overleaf. To select your correct DIY kit, match the colour of the sticker on the side of the COLDBUSTER® box with those on the table.

How do I cater for furniture and fittings in a room?

Heating will generally not be extended under cabinets, wardrobes or heavy furniture, and also not under beds.

The average coverage requirement is 80% - 90% of the available floor area. We have taken this into consideration when calculating the required sizes.

How long does the system take to heat up?

Response time is from 20 - 30 minutes for 6 mm wood laminate. Typically the floor temperature increases by 4°C in the first half hour after switching on.

How does the system affect my energy consumption?

Energy consumption depends on each individual's comfort needs. However, 1 kW of floor heating will be more efficient and cheaper to run than a 1 kW conventional heater, due to thermostat control and the even spread of the heating over the floor surface. Energy efficiency can be further optimised by installing insulation below the heating element.

Do I need a thermostat?

Yes, a thermostat will ensure optimum comfort while running of the system remains cost effective.

The desired temperature (called 'the setpoint') is programmed into the thermostat. The thermostat switches the heating automatically on and off to keep the room temperature at this set point. Energy consumption is therefore reduced, because of the heater not demanding a continuous supply of electric current.

Which thermostat is suitable for me?

Your thermostat should be carefully selected, in order to maximise comfort levels and reduce energy consumption.

There are two suitable models of COLDBUSTER® thermostats: programmable and wireless programmable.

- **EzeeStat II™** - This programmable thermostat is the easy solution for efficiently controlling your COLDBUSTER® floor heating system. The EzeeStat II™ can be configured as a room or floor temperature controller or as a room controller with floor temperature limitation. Suitable for frequently used rooms. Fits on a horizontal 3"x3" or 4"x2" wall box.



- **RemoStat™** - The RemoStat™ programmable wireless thermostat is a portable, battery operated transmitter and one receiver. The RemoStat™ can accommodate extra receivers for multiple heaters. Each receiver can accommodate a floor probe for floor temperature limitation. Suitable for large open plan areas. Ideally suitable for bathrooms. Receiver fits on a 3"x3" wall box. The transmitter can be placed anywhere in the room.



Receiver Transmitter

Both models can handle up to 3.0 kW of heating.

- **RemoXtra™** - An additional receiver to be used in conjunction with the RemoStat™ transmitter. Fits on 3"x3" wall box.



Receiver

The maximum temperature for wood and laminate flooring is determined by the flooring manufacturer and is typically 27°C. This ensures that laminate flooring preserves and maintains its aesthetic appearance without buckling. For this reason a floor sensor should be used in conjunction with your thermostat, to limit the surface temperature of your flooring.

- **EzeeProbe™** - An EzeeProbe™ floor sensor is included in every COLDBUSTER® laminate wood heating kit.



How safe is the heating system under a wood laminate floor?

All COLDBUSTER® heating products have been designed with your safety in mind and are fully earth screened. All floor heating must be connected through an ELCB (Earth Leakage Circuit Breaker).

When connected correctly with a floor limiter, there is no risk of overheating, fire or electrical shock.

Should a qualified electrician be called in for final electrical connection?

Proper installation is paramount to ensure safety. Please follow the installation instructions carefully. If in doubt, employ a competent person to install or check your heating system.

What about electrical compliance?

The COLDBUSTER® floor heating system is classified as a fixed appliance, and as such does not form part of your house wiring system. The heating will be disconnected during testing for electrical compliance.

Can I run my COLDBUSTER® floor heating system off a normal plug point?

Yes, you can run the heating system off a normal plug point. However, if your heaters exceed 3.3 kW you will need to get a qualified electrician to make provision for a separate supply from your Distribution Board.

Can COLDBUSTER® heaters be repaired?

Yes! Each COLDBUSTER® kit includes a KlimaGuard® installation monitor that will alert you of any damage to the element during installation. Should the KlimaGuard® sound an alarm, stop the installation and call the COLDBUSTER® helpline.

Laminate floors can be lifted and repairs made to the heating element.

Is there a support line I can call for assistance?

We have a professional advisory team on standby to consult with you. Should you need assistance call the COLDBUSTER® helpline. For further information, please visit our website.

COLDBUSTER® HELPLINE: 0860 554 629
info@coldbuster.co.za • www.coldbuster.co.za

ALSO AVAILABLE FOR UNDER TILE FLOORING

KMCB - CA - 007 Rev 1 2013,08,14

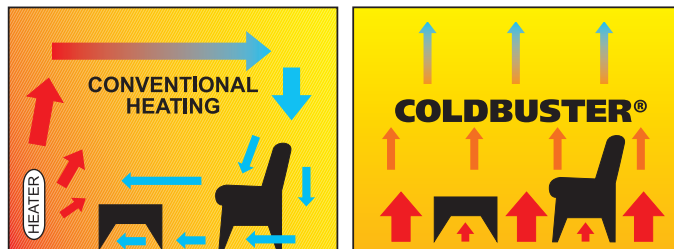
INTERESTING FACTS

Why is floor heating better than air heating?

Floor heating provides a much more comfortable environment as the heat is radiated evenly from the floor, leaving no cold spots and avoiding draughts.

Heat losses are mainly caused by conduction and convection of hot air, which is minimized in the case of radiant heating.

Hot air rises, which means with air heating, the warm air collects against the ceiling. This is not the case with thermal radiation, since there is minimal convection, giving you that top to toe comfort.



Apart from a comprehensive illustrated installation guide, all DIY products come with a user guide which gives many tips on how to run the system to reduce electricity consumption without affecting your comfort.

Choosing the best location for your thermostat.

The position of the thermostat should be chosen so that the sensor can measure the room temperature as accurately as possible. Direct solar radiation, draughts as well as other heating or cooling sources must be avoided as they can result in a false reading of the temperature sensor in the thermostat.

The mounting height should be approximately 1.4 metres.



Benefits of under floor heating:

- **Safe and child friendly**

No open flames or hot surfaces for children to touch, no risks of burning or electrical shock

- **Hygienic**

Floor heating helps to reduce house dust mites, giving asthma sufferers a much better living environment. The lack of moving air is advantageous to people with allergies.

Floor heating does not dry the air the same way air heating does. The lack of air movement reduces dry skin, dry eyes and chapped lips.

- **Economical**

By using a floor heating system placed directly below the floor finish, the response time is much faster than conventional electric in-slab heating.

COLDBUSTER® floor heating systems that are controlled by programmable thermostats only turn on the heaters at required times and comfort levels. With a quick “on-demand” response time, energy consumption is greatly reduced.

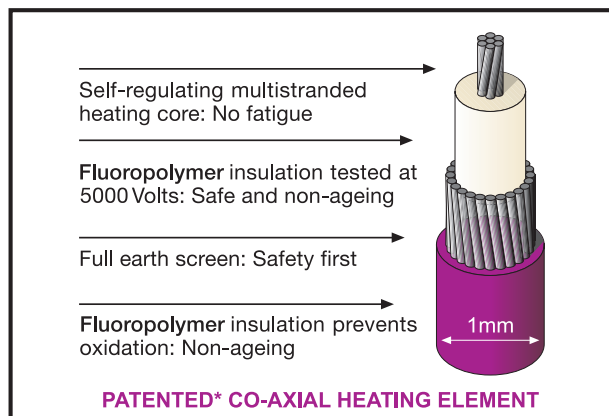
- **Increased comfort without the compromise**

No aesthetic compromise on interior design. Heaters are well hidden.

TECHNICAL INFO

Self-regulating, multi stranded element with a full earth screen. Two layers of insulation with fluoropolymer make it fully waterproof and corrosion resistant.

The COLDBUSTER® element is about 1 mm thick, so it does not affect finished floor levels.



COLDBUSTER® SELECTION TABLES

WOOD B-WARMER® FLOOR HEATING

Guide for all rooms

Room Size (m²)	Colour code	(m²)	Colour code
4		21-22	
5		23-25	
6		26-30	
7-8		31-32	
9-11		33-34	
12-14		35-37	
15-16		38-39	
17-18		40-42	
19-20		43-45	

Heater / Mat size (m²)

300W (2.9 m²)	400W (3.6 m²)	550W (5.1 m²)
700W (6.3 m²)	900W (8.1 m²)	1100W (10.3 m²)

PRODUCT WARRANTY

COLDBUSTER® products are guaranteed to be free of defects at the time of supply to the purchaser. A check for transport damage must be executed when the heater is unpacked. The manufacturer's liability is limited to the replacement of faulty heaters before they are installed.

The manufacturer assumes no responsibility for the improper installation of it's products nor for any consequential loss.

We recommend that COLDBUSTER® floor heating is installed by an experienced installer or cautious DIY person and that electrical connections be made by a qualified electrician.

For more information on the COLDBUSTER® floor heating system, visit our website or contact our call centre. Our knowledgeable staff are always happy to advise you.

COLDBUSTER® HELP LINE: 0860 554 629
info@coldbuster.co.za • www.coldbuster.co.za